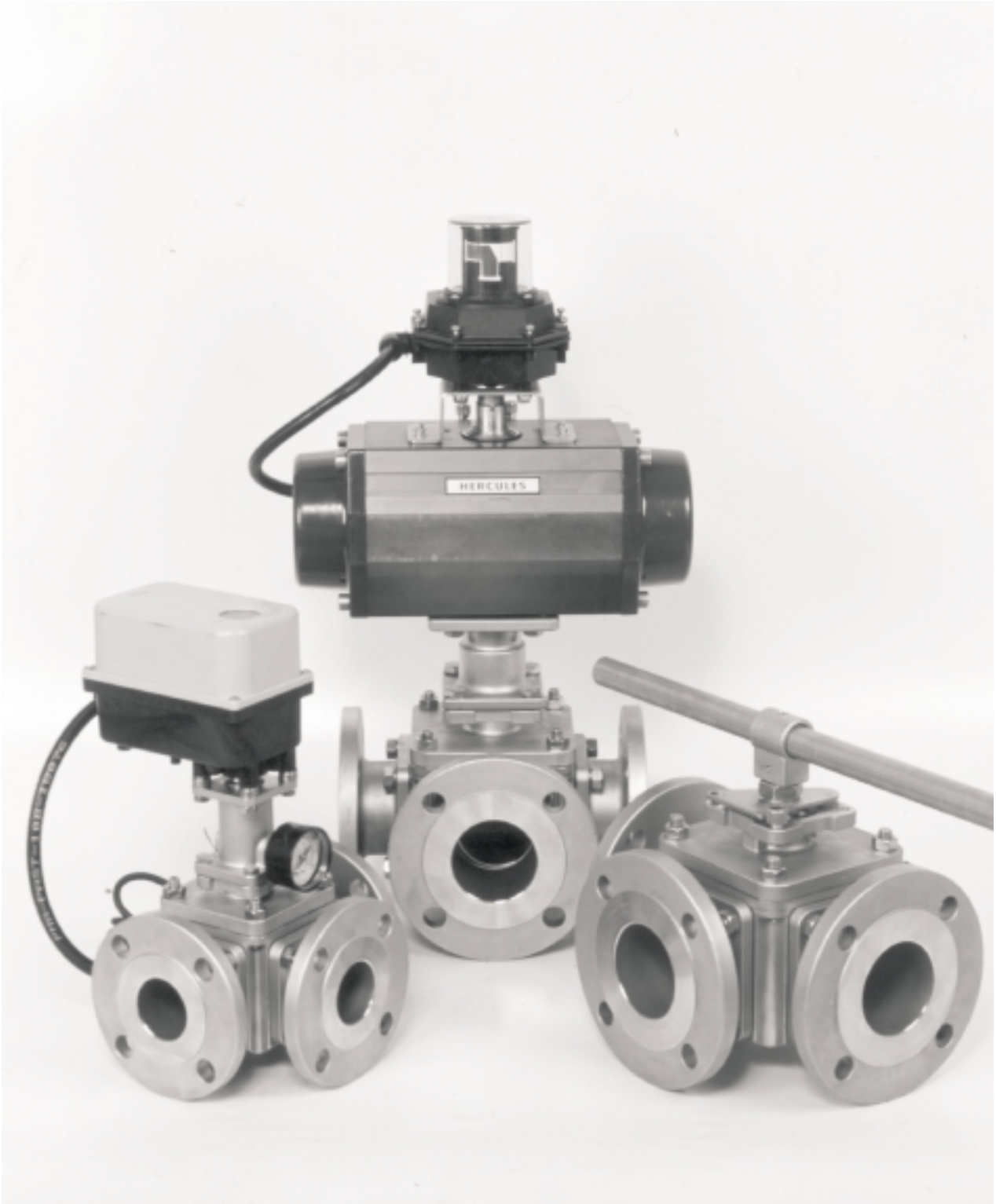


Series 30M

MULTI-PORT FLANGED 3 & 4 WAY BALL VALVES
FULL PORT L, T, OR LL BALL



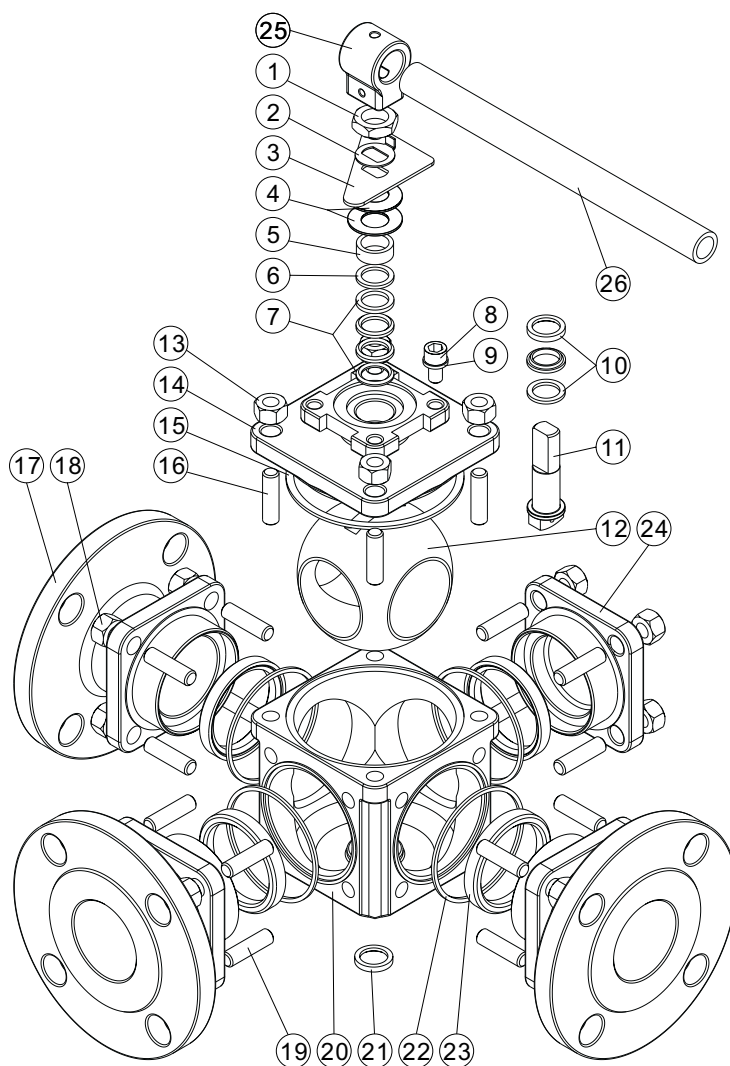
MANUAL OR AUTOMATED 2" - 6" (DN50 - DN150)

Features:

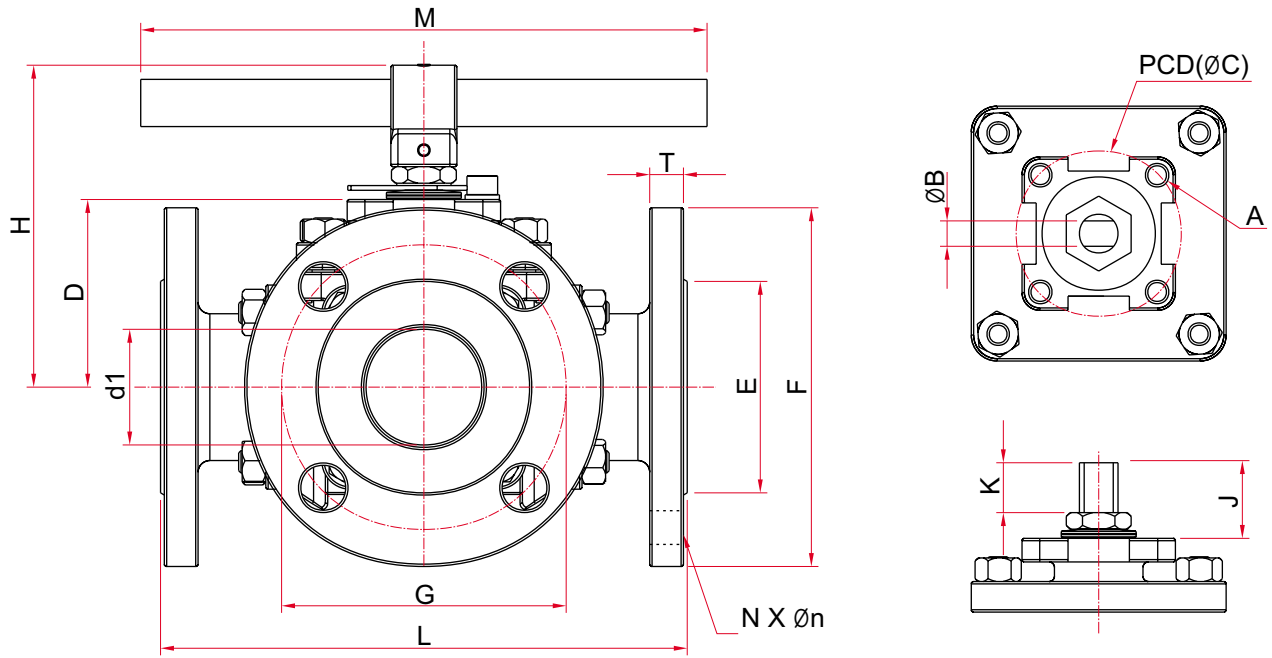
- Patented "Sealmaster™" Stem Arrangement
- Double Stem Sealing to comply with TA-Luft Requirements
- Blow-out Proof Stem
- Anti-Static devices
- Built-in ISO 5211 Mounting Pad for easy automation
- Optional Ball & Body pattens for various flow paths
- Easy to interface with TV's Ball valve accessories
- Extremely versatile Valve design for Diversion or Mixing
- Features Four Ball Seats for rigid Ball Supporting
- Heavy Duty Body Construction to ANSI class 300
- Simplicity in Replacing Valve seats and Packing
- Cost efficient-one valve can replace two or more two-way valves
- Investment Casting up to 4"(DN100)
- Optional Castings per AD-WO/TRD-100 are available

Material of construction

NO	PART NAME	MATERIAL		Q'TY
1	HANDLE NUT	SUS304	S45C	1
2	LOCK WASHER	SUS304		1
3	TRIANGLE STOPPER	SUS304		1
4	BELLEVILLE WASHER	SUS301	WCB1075	1
5	GLAND	SUS304		1
6	THRUST WASHER	50% PTFE/50% SS POWDER		1
7	V-RING STEM PACKING	PTFE		1 SET
8	STOP BOLT	A193 Gr.B8	A193 Gr.B7	1
9	SPRING WASHER	SUS304	S45C	1
10	SEAL ARRANGEMENT	TFM 1600 SUS316 50% PTFE / 50% SS POWDER		1 SET
11	ANTI-STATIC STEM	A276 TYPE 316		1
12	BALL	ASTMA351 Gr.CF8M		1
13	NUT	A194 Gr.8	A194 Gr. 2H	4
14	COVER	ASTMA351 Gr.CF8M	ASTM A216 WCB	1
15	COVER SEAL	PTFE		1
16	STUD	A193 Gr. B8	A193 Gr. B7	4
17	FLANGE CAP	ASTM A351 Gr.CF8M	ASTM A216 WCB	3 or 4
18	NUT	A194 Gr.8	A194 Gr. 2H	16
19	STUD	A193 Gr. B8	A193 Gr. B7	16
20	BODY	ASTMA351 Gr.CF8M	ASTM A216 WCB	1
21	BALL SUPPORT BEARING	25% CARBON FILLED PTFE		1
22	BODY SEAL	PTFE		4
23	BALL SEAT	PTFE		4
24	*BLOCK CAP	ASTM A351 Gr.CF8M	ASTM A216 WCB	1
25	HANDLE ADAPTOR	ASTMA351 Gr.CF8M		1
26	PIPE HANDLE	SUS304		1



* NO BLOCK CAP FOR 4 WAY



SIZE	DN	ØB	ØC	PCD	A	Ød1	D	H	M	J	K
2"	50	9.5	F07	70	M8 / Ø8.7	50	80	136.5	200	23.5	14
2½"	65	17	F10	102	M12 / Ø12.3	65	95	162	400	41.5	22.4
3"	80	17	F10	102	M12 / Ø12.3	80	109	186	400	41.5	19
4"	100	17	F10	102	M12 / Ø12.3	100	125	213	500	47.5	25.9
6"	150	23	F12	125	M12 / Ø12.3	152	160	272	600	65	36.5

ANSI STANDARD

RATING : ANSI B16.34 CLASS 150 (BS5351 CLASS 150)
ANSI B16.34 CLASS 300 (BS5351 CLASS 300)

CONNECTION : ANSI B16.5RF, SERRATED FINISH (Ra 3.2 - 6.3)
(BS 1560 PART 2 RF)

SIZE	DN	L	ØG	*ØG	ØE	T	*T	ØF	*ØF	N	*N	Øn	*Øn
2"	50	220	120.5	127	92	15.9	22.3	152	165	4	8	19	19
2½"	65	280	139.5	149	105	17.5	25.4	178	190	4	8	19	22
3"	80	285	152.5	168	127	19.1	28.6	190	210	4	8	19	22
4"	100	347	190.5	200	157	23.9	31.8	229	254	8	8	19	22
6"	150	430	241.3	269.9	216	25.4	36.6	279	316	8	12	22	22

* DIMENSION FOR ANSI CLASS 300

DIN STANDARD

RATING : DIN 3357 PN 10 - PN 40
FACE TO FACE : DIN 3202 F1 LONG PATTERN

CONNECTION : DIN 2501/1 PN 10 - PN 40
FACING DIN 2526 FORM C

SIZE	DN	L	ØG	*ØG	ØE	*ØE	T	*T	ØF	*ØF	N	*N	Øn	*Øn
2"	50	230	125	125	102	102	20	20	165	165	4	4	18	18
2½"	65	290	145	145	122	122	18	22	185	185	4	8	18	18
3"	80	310	160	160	138	138	20	24	200	200	8	8	18	18
4"	100	350	180	190	158	162	20	24	220	235	8	8	18	22
6"	150	480	240	250	212	218	22	28	285	300	8	8	22	26

* DIMENSION FOR DIN PN 25/40

JIS STANDARD

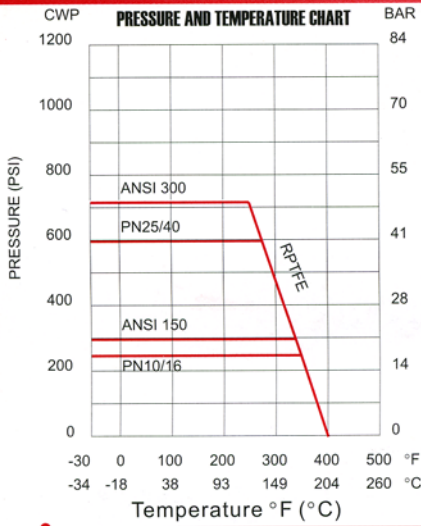
RATING : JIS 10K
JIS 20K

CONNECTION : JIS B2212 (10K)
JIS B2214 (20K)

SIZE	DN	L	ØG	*ØG	ØE	*ØE	T	*T	ØF	*ØF	N	*N	Øn	*Øn
2"	50	220	120	120	100	100	16	18	155	155	4	8	19	19
2½"	65	280	140	140	120	120	18	20	175	175	4	8	19	22
3"	80	285	150	160	130	135	18	22	185	200	8	8	19	23
4"	100	347	175	185	155	160	18	24	210	225	8	8	19	23
6"	150	430	240	260	215	230	22	28	280	305	8	12	23	25

* DIMENSION FOR JIS 20K

Engineering Data

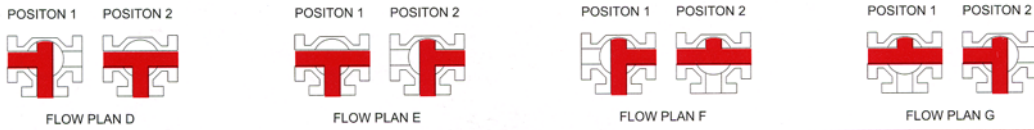


Cv

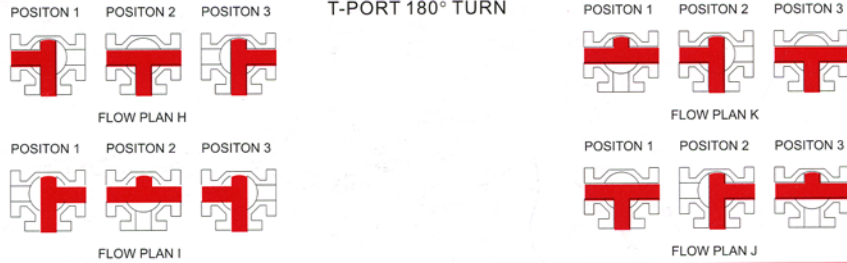
Size	L PORT Form 1, 2	T PORT Form 2, 3	T PORT Form 4	LL PORT Form 1, 2
2"	110	100	430	95
2½"	160	150	670	137
3"	260	240	1170	220
4"	430	400	2070	366
6"	980	970	5000	830

All T-Port Flow Patterns can be changed in the field without disassembling valve

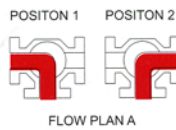
T-PORT 90° TURN



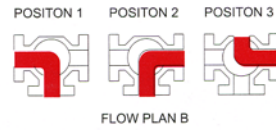
T-PORT 180° TURN



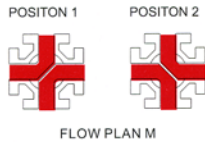
L-PORT 90° TURN



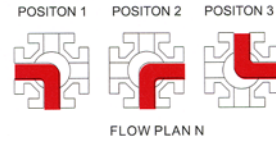
L-PORT 180° TURN



LL-PORT 90° TURN



L-PORT 180° TURN



4-WAY VALVES

Optional Plans Available
Using T, L and Standard Ball
Consult Factory

ORDERING INFORMATION

30M MULTI PORT - FLANGE - FULL PORT - SS316 - RPTFE - 2-1/2" - PN 10/16 - T-HANDLE - ANGLE PORT(L) - 3-WAY

30M - **F** - **1** - **1** - **R** - **J** - **E** - **3** - **2** - **A**

END CAP TYPE	PORT TYPE	BODY, CAP /BALL, STEM	SEAT MATERIAL	SIZE	PRESSURE	HANDLE TYPE	BALL PORT CONFIGURATION	BODY PORT CONFIGURATION
F FLANGE	1 FULL PORT	1 CF8M/316	R RPTFE	H 2"	A ANSI 150	3 T-HANDLE	1 Tee-Port(T)	A 3-way
O OTHER		4 WCB/316		J 2½"	B ANSI 300	6 EXTENDED T-HANDLE	2 Angle Port(L)	B 4-way
				K 3"	E PN 10/16 F1	8 BARE SHAFT	3 LL Port(LL)	
				L 4"	H PN 25/40 F1	9 GEAR BOX		
				N 6"	K JIS 10K			
				L 6"	L JIS 20K			

*For reduced port or large size, please consult factory for details.

• ALL VALVES 100% AIR TESTED UNDER WATER AT 100 PSI, FOR BUBBLE TIGHT

With continuous product improvement, all specifications, descriptions and information contained herein are subject to change with liability excluded. All information contained herein was current at the time of publication.

AGENT: