

KV Control Valves

Globe Control Valves, type KV
Pneumatic Diaphragm Actuators, Type S
Pneumatic Screw in Temperature Controllers



Operating Instruction
Edition May 2003

Table of content

1 Safety instructions

2 General

- 2.1 Valve applications
- 2.2 Design and principles
 - Globe control valves
 - Pneumatic diaphragm actuators, type S
- 2.3 Mounting positions
- 2.4 Mounting and connections
- 2.5 Pre loading the springs

3 Pneumatic Diaphragm Actuators

- 3.1 Separate and assemble valve and actuator
- 3.2 Change fail-safe position
- 3.3 Exchange diaphragm
- 3.4 Electrical actuators

4 Control Valves

- 4.1 Exchange stem packing
- 4.2 Exchange stem packing and body gaskets
- 4.3 Exchange stem and plug
- 4.4 Reduction of kv-value
- 4.5 Types of plugs

5 Pneumatic Screw-in Temperature Controllers

- 5.1 Applications and principles
- 5.2 Mounting and connections
- 5.3 Adjust control air
- 5.4 Adjust temperature

6 Service

- 6.1 Calculation and offer
- 6.2 Guidance and service

1 Safety instructions.

KV globe control valves may only be mounted, started up or serviced by qualified and trained personnel, observing the accepted industry codes and practices.

KV globe control valves fulfil the European Pressure Equipment Directive 97/23/EC. Take necessary precautions to eliminate risk from medium, pressure and moving parts. Make sure that operating pressure and temperatures do not exceed the design values of the valves.

Proper shipping and storage are assumed.

2 General.

2.1 Applications for valves

Valves in cast iron GG-25 :

- nominal pressure PN 16
- max. 225 °C to 12 bars
- max. 120 °C to 16 bars

Valves in ductile iron GGG-40.3 :

- nominal pressure PN 40
- max. 225 °C to 36 bars
- max. 120 °C to 40 bars

Valves in cast steel GP240GH:

- nominal pressure PN 40
- max. 225 °C to 37 bar
- max. 120 °C to 40 bar

Valves in stainless steel 1.4581:

- nominal pressure PN 40
- max. 225 °C to 32 bar
- max. 120 °C to 40 bar

2.2 Design and principles.

Enclosure 1 : Globe control valve.

The globe control valve is straightway body with single seated plug.

Enclosure 4 : Pneumatic diaphragm actuator, type S. Pneumatic diaphragm actuator, type S is used for pneumatic control signal 0,2 – 1,0 bar (3-15 psig) or for max. 6 bars air pressure for positioner or on/off duty.

By falling or failing control signal the force of the spring will move the stem below into the valve body by NC and upwards from the valve body by NO.

2.3 Mounting positions in the pipe system.

Globe control valve has flow direction according to the arrow casted into the valve body.

Optimum position is the valve built in horizontal pipe with the actuator above. All other positions require higher maintenance. Actuators weighing more than 50 kg built in with horizontal stem position must be installed with suitable support.

El-actuators or pneumatic actuators with electrical equipment, such as positioners, are advised against placement under the valve.

By pneumatic actuator with only two actuator rods and horizontal stem position, the two rods must be place above/below each other.

This is made by loosening the nut right above the frame plate, turn the frame plate in right position and tighten the nut again.

2.4 Mounting and connections.

The valves must not be mounted in pipe system with displacement or out of angle. The valves must not absorb forces or torques transferred from the pipe system.

Air connection: 1/8" RG

For pneumatic actuator, type S, air is connected below the actuator for normally closed valve (NC) and above the actuator for normally open valve (NO).

Connections for positioners, el-actuators and other equipment will appear from specific documentation.

2.5 Pre loading the springs of NC actuators.

For actuator controlled from PROFLEX pneum. screw-in temperature controller is 0,2 bars air pressure supplied in the air chamber of the actuator. For actuator controlled by positioner or for on/off duty the air chamber is made pressureless. The operating pressure of the pipe system is supplied.

Actuator type S :

Loosen the stem coupling (20) between the valve- and actuator stem. Loosen the lock-nut below the adjustment nut (11). Screw the valve stem out of the adjustment nut (11) until the valve closes against the operating pressure of the pipe system. Tighten the lock-nut and stem coupling again.

3 Actuators.

3.1 Separate and assemble valve and actuator.

Actuator, type S :

Disassemble air supply to pneumatic actuator.

Disassemble stem coupling (20) between valve- and actuator stem. Loosen the lock-nut below the adjustment nut (11) and screw out the valve stem from the adjustment nut. Disassemble the stem packing nut (1) and the nut above the frame plate. The actuator is loose and can be lifted up from the valve. Opposite for assembling

3.2 Change fail-safe position.

Actuator, type S :

Order spring kit for new fail-safe position at KLINGER.DK.

Disassemble air supply to pneumatic actuator.

Disassemble set screws (3), the two longest at last because the springs inside the actuator are pre loaded.

Disassemble the top cover (1), while the diaphragm (14) remains. Disassemble nut (13).

Disassemble diaphragm plate (5), diaphragm (14) and washer (6). Exchange springs to new spring kit. Assemble diaphragm plate (5), diaphragm (14) and washer (6) upside down on the actuator stem. Opposite for assembling.

Air supply is connected under the actuator for normally close function (NC) and above the actuator for normally open function (NO).

3.3 Exchange diaphragm.

Actuator, type S :

Disassemble air supply to pneumatic actuator.

Disassemble set screws (3), the two longest at last because the springs inside the actuator are pre loaded.

Disassemble the top cover (1), while the diaphragm (14) remains. Disassemble nut (13). Exchange diaphragm (5).

Opposite for assembling.

3.4 El-actuators.

For KV control valves with el-actuators :

See enclosed operating instruction from supplier of el-actuator.

4 Valves.

4.1 Exchange stem packing.

Actuators, type S :

Depressurize the pipeline and take precautions for all other risks from the medium. Separate the actuator from the valve (see section 3.1). Exchange stem packing.

Opposite for assembling.

4.2 Exchange stem packing and body gaskets.

A complete valve packing kit consists of a stem packing which is exchanged according to section 4.1. Additionally the valve packing kit consists of :

- A bottom gasket between valve body and bottom plug / -cover.
- An upper cover gasket between valve body and upper cover.
- An upper part gasket between upper cover and upper part.

4.3 Exchange stem and plug.

It is recommended to exchange complete valve packing kit in connection with exchange stem and plug.

Stem and plug is looked on as one component.

While valve body and valve upper part is separated, draw out the old stem downward and insert the new stem.

4.4 kvs-values.

KV valves is delivered as standard with the biggest kvs-value for the mentioned body dimension (DN).

If the kv-requirement is essentially smaller in same body dimension, the valves can be offered with reduced kvs-value step I or step II.

4.5 Types of plugs

KV globe control valves can be delivered as metal seated, PTFE soft seated or with flow divider. By correct calculation of the actuator and correct setting of the positioner, the KV globe control valves can be delivered tight closing.

5 Pneumatic screw-in temperature controllers.

5.1 Applications and principles. (enclosure 6)

KV temperature controller is a screw-in temperature element with a pneumatic proportional controller.

KV temperature controller is used as temperature transmitter and pneumatic proportional controller in one simple unit. Together with KV control valves with pneumatic diaphragm actuators, type S, a complete temperature control loop can be made.

KV temperature controller is available as direct acting (T105) or reversed acting (T106). In this way, it is possible to make solutions with KV temperature controller in connection with heating as with cooling and for normally closed valves (NC) as for normally open valves (NO).

5.2 Mounting and connections.

The temperature controller is mounted in the pipe system where the temperature must be kept constant (for instance the hot water outlet from a heat exchanger).

The control valve is mounted in the pipe system where the control medium is present (for instance the steam inlet to a heat exchanger).

The air supply must be reduced to 1,5 barg in a filter-regulator before connection to the air supply inlet 1/8" (connection where an arrow turning inwards).

The control air outlet 1/8" (connection there an arrow turning outwards) is connected to the pneumatic actuator of the control valve.

5.3 Adjust control air pressure.

The control air pressure of the temperature controller is pre-adjusted from factory, but can be adjusted to the specific control as follows :

(Example is for normally closed valve (NC)).

- The filter-regulator is adjusted to 1,5 barg in outlet pressure.
- Disassemble the ring cover of the controller head by the 2 side screws.
- Connect a manometer to the control air outlet (arrow turning outwards).
- Screw the set point of the temperature controller down to lowest temperature. Then the control air pressure will simulate closed valve.
- The inlet reduction screw (the brass screw which the arrow turns inwards against) is adjusted to the

control pressure shows 0,1 bars on the manometer.

- The air outlet is connected to the air chamber of the pneumatic diaphragm actuator and the pre-loading of the springs is adjusted according to section 2.5.
- The air outlet is connected to the manometer again and the inlet reduction screw is adjusted to the control pressure shows 0,2 bars on the manometer and assemble the ring cover by the 2 side screws.
- The air outlet is connected to the air chamber of the pneumatic diaphragm actuator again and turn the temperature of the controller to the set point.

5.4 Adjust temperature.

It is recommended to adjust the temperature of the temperature controller by use of a thermometer as follows :

- Mount the thermometer as close as possible to the temperature controller in the pipe system.
- If the indication of the thermometer and the adjusted set point of the temperature controller are different from each other, assemble the plastic plug on the set screw in front of the controller head and loosen the screw behind.
- Turn the set screw to the temperature indication of the scale which correspond with the temperature indicated on the thermometer.
- Tighten the set screw and mount the plastic plug.

6 Service.

6.1 Service.

The mentioned products in this operating instruction is produced in Denmark by KLINGER.DK.

For service needs in connection with delivered equipment technicians by KLINGER.DK can be reached on following telephone numbers :

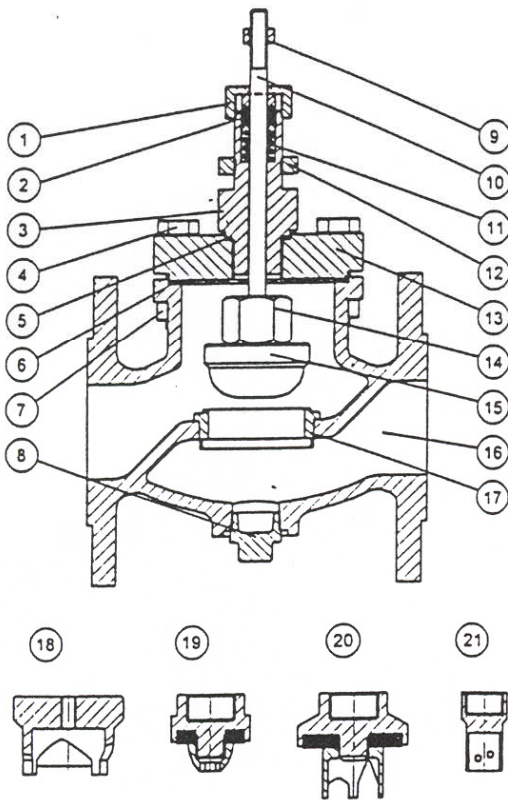
- East Denmark + 45 43 64 66 11
- West Denmark + 45 86 44 80 00

6.2 Calculation and quotation.

Calculation of control valves, pneumatic actuators, temperature controllers, positioners and other control equipment can be made by technicians of KLINGER.DK

ENCLOSURE 1

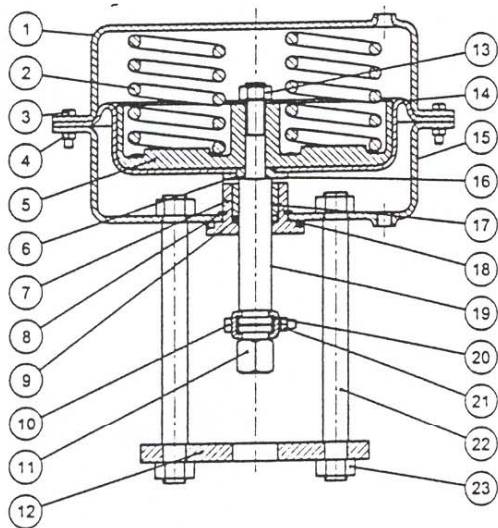
Component list



Comp.	Description
1	Stem packing nut
2	Stem packing
3	Upper part
4	Bolt
5	Upper part gasket
6	Upper cover gasket
7	Nut
8	Bottom plug
9	Lock-nut
10	Stem
11	Stem packing spring
12	Frame plate nut
13	Upper cover
14	Plug lock-nut
15	Metal seated plug (DN 15 - DN 25)
16	Body
17	Seat
18	Metal seated plug (DN 32 - DN 150)
19	Soft seated plug (DN 15 - DN 25)
20	Soft seated plug (DN 32 - DN 150)
21	Perforated plug for reduced kvs-value

ENCLOSURE 4

Pneumatic diaphragm actuator, type S

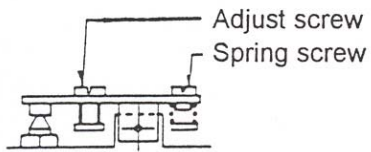


Component list

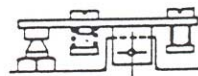
Comp.	Description
1	Top cover
2	Spring
3	Set screw
4	Nut
5	Diaphragm plate
6	Washer
7	Stem packing
8	Seeger ring
9	O-ring
10	Screw
11	Adjustment nut
12	Frame plate
13	Nut
14	Diaphragm
15	Bottom cover
16	O-ring
17	Slide bearing
18	O-ring
19	Stem
20	Stem linkage
21	Nut
22	Actuator rod
23	Nut

ENCLOSURE 6

Pneumatic screw-in temperature controller



Direct acting



Reversed acting

