



# Pressure Reducing Valves

## Series GD-2000K and GP-2000K

***These instructions should be used by experienced personnel!***

### **PRODUCT DESCRIPTION**

*Model shown on the picture: GD-2000K*

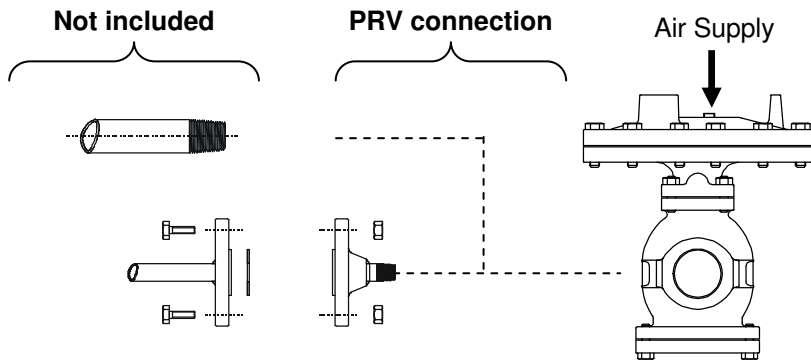
Armstrong Nodular Iron Air Piloted Pressure Reducing Valve.  
For Steam applications only.

*For detailed material specifications, approximate dimensions and weight, see Armstrong literature or consult your local Representative.*

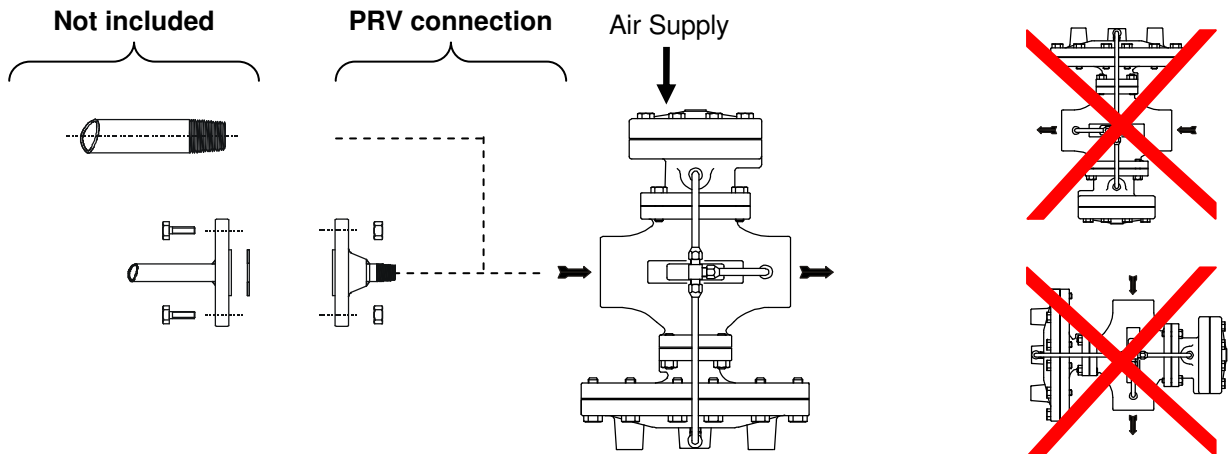


### **INSTALLATION**

*Model shown on the drawing: GD-2000K*



*Model shown on the drawing: GP-2000K-1*



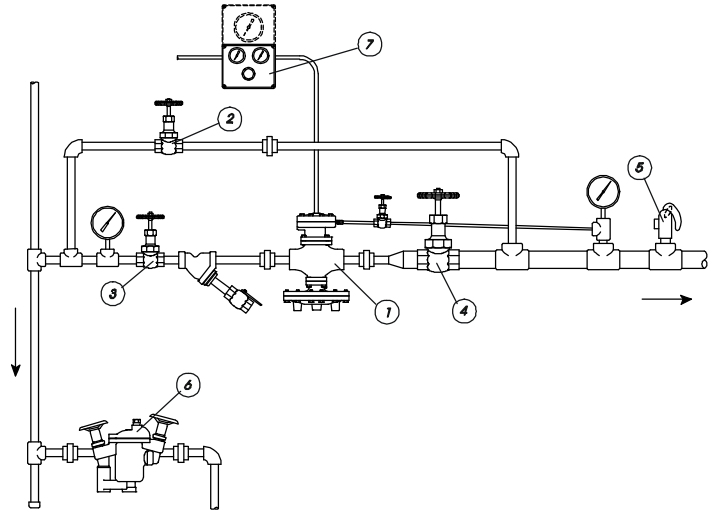
### **START-UP, ADJUSTMENT AND SHUT-DOWN PROCEDURE**

*For detailed hookups and adapted start-up and shut-down procedures, see Armstrong literature or consult your local Representative.*

*Downstream demand is necessary to set the pressure reducing valve.*

- Close the isolation valves (3 & 4) and open the by-pass valve (2) to blow-down inlet piping. After having blown the system down, close the by-pass valve (2);

- Make sure steam trap (6) is operating properly;
- Make sure air supply (7) is closed in order to set the adjusting spring free;
- Completely open the inlet valve (3) and partially open the outlet valve (4);
- Set the air supply (7) pressure so that the desired pressure is reached at the outlet of the Pressure Reducing Valve (1);
- Completely open the outlet valve (4), pressure reducing station should now operate normally;
- To shut the system down, close the inlet valve (3) first, then the outlet valve (4).



## **MAINTENANCE**

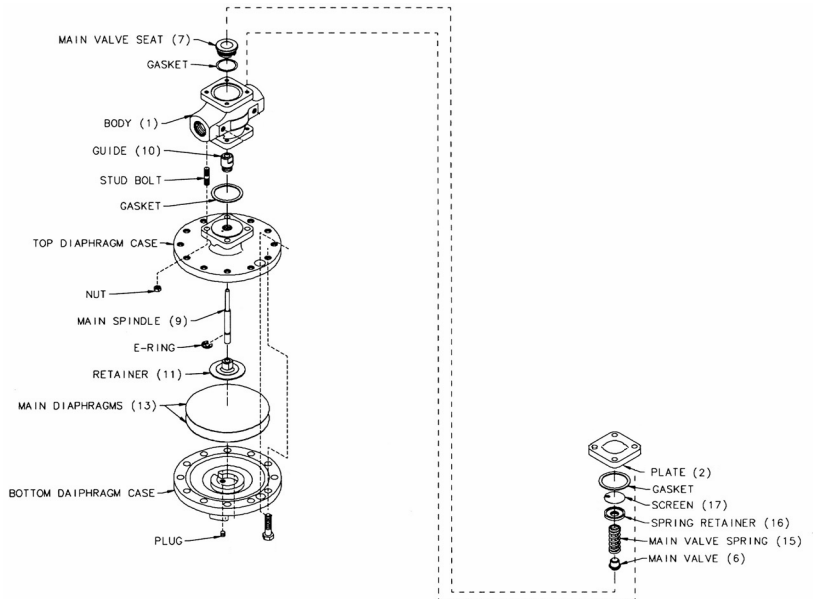
For troubleshooting, testing methods, frequency of maintenance and detailed spare parts list, see Armstrong literature or consult your local Representative.



**EQUIPMENT UNDER PRESSURE  
OPERATING TEMPERATURE >100 °C  
MAKE SURE PRESSURE REDUCING VALVE IS COLD BEFORE HANDLING**

### **I. Main Valve Replacement:**

- Unscrew the 4 bolts linking the plate (2) to the main body (1).
- Remove the spring retainer (16), the screen (17), the main spring (15) and the main valve (6). Clean or replace main valve (6) if necessary;
- Unscrew the 4 bolts between the main body (1) and the top of the diaphragm case. Remove main valve seat (7) and clean or replace it if necessary;
- Assemble in opposite order. Replace gaskets if necessary.



Model shown on the drawing: GD-2000K

### **II. Main Diaphragm Replacement:**

- Remove all bolts and nuts linking the top diaphragm case and the bottom diaphragm case;
- Remove the 2 main diaphragms (13), the retainer (11) and the main spindle (9);
- Replace the diaphragms (13) if they are damaged;
- Assemble in opposite order. Replace gaskets if necessary.

### **III. Series GP-2000K: Air Loaded Pilot Maintenance:**

For detailed maintenance instructions of the GP-2000K air loaded pilot, please consult your Armstrong Representative.